



CONFIDENT BEGINNER | 1 DAY CLASS

# FUNNY BONES

Finished Quilt: 77" x 77"

Quilt design by Wendy Sheppard, featuring Sparkle + Fade along with Indah Batiks.

Funny Bones by Wendy Sheppard features an Asymmetrical Block, perfect for highlighting the large scale prints from Sparkle + Fade.



Q4467 3M-White Metallic

Q4467 4M-Black Metallic

Q4467 55M-Charcoal Metallic

Q4468 4M-Black Metallic

Q4469 3M-White Metallic

Q4469 4M-Black Metallic

Q4469 55M-Charcoal Metallic

Q4471 4M-Black Metallic

Q4470 3M-White Metallic

Q4471 55M-Charcoal Metallic

Q4470 55M-Charcoal Metallic

148 3G-White Gold

Q4471 4M-White Metallic

166 65S-Chalk

| FABRICS                     | 1 KIT    |
|-----------------------------|----------|
| Q4467 3M-White Metallic     | 1/2 Yard |
| Q4467 4M-Black Metallic     | 1/4 Yard |
| Q4467 55M-Charcoal Metallic | 1 Yard*  |
| Q4468 4M-Black Metallic     | 3/8 Yard |
| Q4469 3M-White Metallic     | 7/8 Yard |
| Q4469 4M-Black Metallic     | 3/8 Yard |
| Q4469 55M-Charcoal Metallic | 3/8 Yard |

| FABRICS                     | 1 KIT       |
|-----------------------------|-------------|
| Q4470 3M-White Metallic     | 1/2 Yard    |
| Q4470 55M-Charcoal Metallic | 1/2 Yard    |
| Q4471 3M-White Metallic     | 3/8 Yard    |
| Q4471 4M-Black Metallic     | 1/8 Yard    |
| Q4471 55M-Charcoal Metallic | 1/4 Yard    |
| 148 3G-White Gold           | 2 Yards     |
| 166 65S-Chalk               | 1 3/4 Yards |

\* includes binding

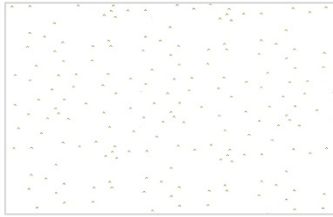
FREE PATTERN DOWNLOAD

[HoffmanFabrics.com](http://HoffmanFabrics.com)

# Funny Bones

Finished Quilt Size: 74" x 77 1/2"

Cutting directions:



148 White Gold

2y

Cut for:

a. pieced blocks

(1) 6 1/2" x WOF. Sub-cut (40) 1" x 6 1/2" rectangles.

(1) 8 1/2" x WOF. Sub-cut (40) 1" x 8 1/2" rectangles.

b. sashing rectangles

(1) 15 1/2" x WOF. Sub-cut (16) 2" x 15 1/2" rectangles.

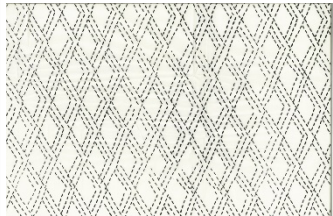
c. sashing strips

(5) 2" x WOF. Piece strips and sub-cut (3) 2" x 61 1/2" strips.

d. inner border

(7) 3 1/2" x WOF. Piece strips and sub-cut (2) 3 1/2" x 65" and

(2) 3 1/2" x 67 1/2" strips.



166 Chalk

1 3/4y

Cut for:

a. pieced blocks

(2) 2 1/2" x WOF. Sub-cut (5) 2 1/2" x 7" rectangles and (7) 2 1/2" x 3" rectangles.

(6) 3 1/2" x WOF. Sub-cut (6) 3 1/2" x 8", (6) 3 1/2" x 6 1/2", (7) 3 1/2" x 6", (7) 3 1/2" x 4", (2) 3 1/2" x 6" rectangles and (2) 3 1/2" x 3 1/2" squares.

b. outer border

(8) 4" x WOF. Piece strips and sub-cut (2) 4" x 71" and (2) 4" x 74 1/2" strips.



Q4467 White  
Metallic

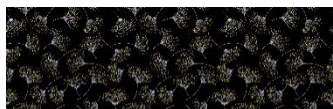
1/2y

Cut for:

a. pieced blocks

(2) 3 1/2" x WOF. Sub-cut (3) 3 1/2" x 6", (2) 3 1/2" x 6 1/2", (2) 3 1/2" x 8" rectangles and (3) 3 1/2" x 3 1/2" squares.

(1) 5 1/2" x WOF. Sub-cut (2) 5 1/2" x 8 1/2" rectangles.



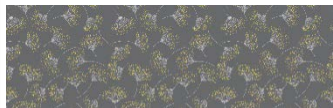
Q4467 Black  
Metallic

1/4y

Cut for:

a. pieced blocks

(1) 5 1/2" x WOF. Sub-cut (2) 5 1/2" x 8 1/2" rectangles.



Q4467 Charcoal  
Metallic

3/8y

Cut for:

a. pieced blocks

(2) 3 1/2" x WOF. Sub-cut (2) 3 1/2" x 6 1/2" and (2) 3 1/2" x 8" rectangles.

(1) 5 1/2" x WOF. Sub-cut (2) 5 1/2" x 8 1/2" rectangles.

b. (8) 2 1/2" x WOF for binding.



Q4468 Black  
Metallic

3/8y

Cut for:

a. pieced blocks

(1) 8 1/2" x WOF. Sub-cut (3) 5 1/2" x 8 1/2" rectangles.



Q4469 White  
Metallic

7/8y

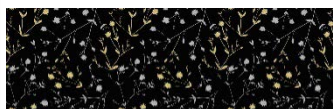
Cut for:

a. pieced blocks

(2) 2 1/2" x WOF. Sub-cut (6) 2 1/2" x 7" rectangles.

(4) 3 1/2" x WOF. Sub-cut (2) 3 1/2" x 3 1/2" squares, and (8) 3 1/2" x 6", (6) 3 1/2" x 8", (6) 3 1/2" x 6 1/2" rectangles.

(1) 5 1/2" x WOF. Sub-cut (2) 5 1/2" x 8 1/2" rectangles.



Q4469 Black  
Metallic

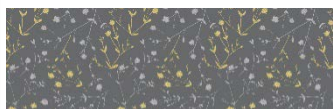
3/8y

Cut for:

a. pieced blocks

(1) 3 1/2" x WOF. Sub-cut (2) 3 1/2" x 6" and (2) 2 1/2" x 7" rectangles.

(1) 5 1/2" x WOF. Sub-cut (3) 5 1/2" x 8 1/2" rectangles.



Q4469 Charcoal  
Metallic

3/8y

Cut for:

a. pieced blocks

(1) 3 1/2" x WOF. Sub-cut (2) 3 1/2" x 3 1/2" squares and (2) 3 1/2" x 6" rectangles.

(1) 5 1/2" x WOF. Sub-cut (3) 5 1/2" x 8 1/2" rectangles.



Q4470 White  
Metallic

1/2y

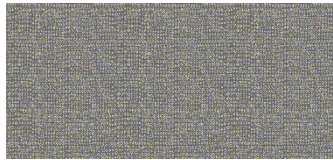
Cut for:

a. pieced blocks

(2) 2 1/2" x WOF. Sub-cut (5) 2 1/2" x 3" and (4) 2 1/2" x 7" rectangles.

(3) 3 1/2" x WOF. Sub-cut (5) 3 1/2" x 4", (2) 3 1/2" x 8", (2) 3 1/2" x 6 1/2" rectangles and (7) 3 1/2" x 6" rectangles, and (3) 3 1/2" x 3 1/2" squares.





Q4470 Charcoal  
Metallic

1/2y

Cut for:

a. pieced blocks

(1) 2 1/2" x WOF. Sub-cut (8) 2 1/2" x 3" rectangles.

(3) 3 1/2" x WOF. Sub-cut (8) 3 1/2" x 4", (5) 3 1/2" x 6" rectangles and (5) 3 1/2" x 3 1/2" squares.



Q4471 White  
Metallic

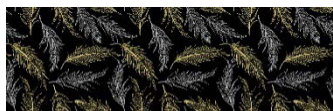
3/8y

Cut for:

a. pieced blocks

(1) 2 1/2" x WOF. Sub-cut (3) 2 1/2" x 7" rectangles.

(2) 3 1/2" x WOF. Sub-cut (3) 3 1/2" x 6", (2) 3 1/2" x 8" and (2) 3 1/2" x 6 1/2" rectangles.



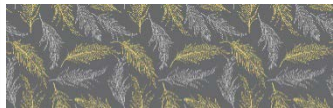
Q4471 Black  
Metallic

1/8y

Cut for:

a. pieced blocks

(1) 3 1/2" x WOF. Sub-cut (3) 3 1/2" x 3 1/2" squares and (3) 3 1/2" x 6" rectangles.



Q4471 Charcoal  
Metallic

1/4y

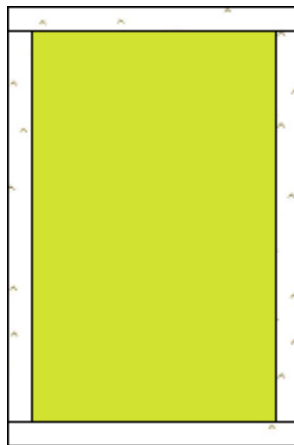
Cut for:

a. pieced blocks

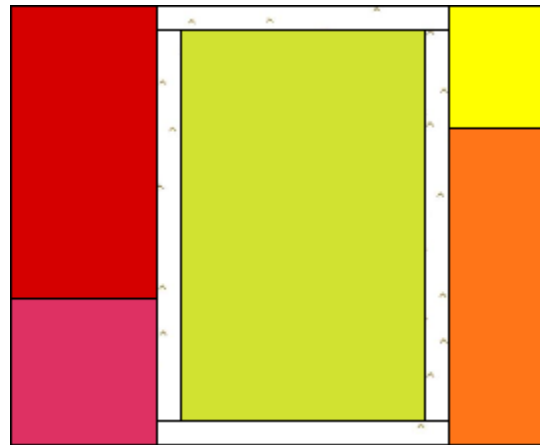
(1) 5 1/2" x WOF. Sub-cut (3) 5 1/2" x 8 1/2" rectangles.

### Constructing pieced blocks

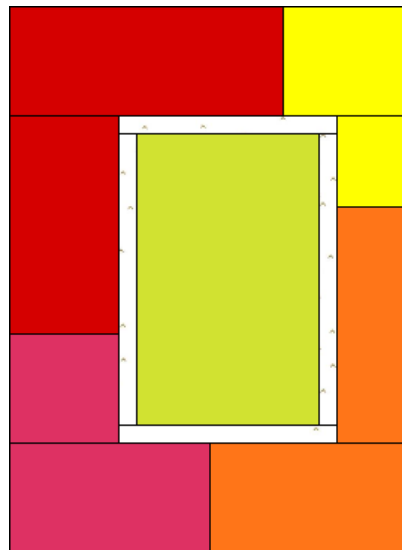
1. Block center. Sew (2) 1" x 8 1/2" **148 White Gold** rectangles to the opposite long sides of (1) 5 1/2" x 8 1/2" **fabric 1** rectangle, followed by (2) 1" x 6" **148 White Gold** rectangles to the remaining opposite short sides of **fabric 1** rectangle.



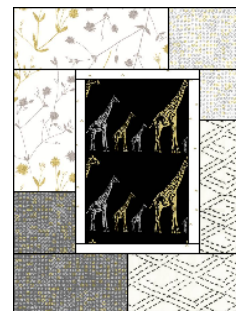
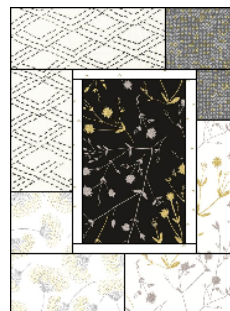
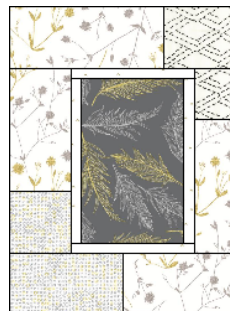
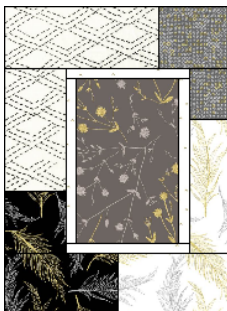
2. Sew (1) 3 1/2" x 6 1/2" **fabric 2** rectangle at the top of (1) 3 1/2" x 3 1/2" **fabric 3** square, and add to the left side of block center. Sew (1) 2 1/2" x 3" **fabric 4** rectangle at the top of (1) 2 1/2" x 7" **fabric 5** rectangle, and add to the right side of block center.



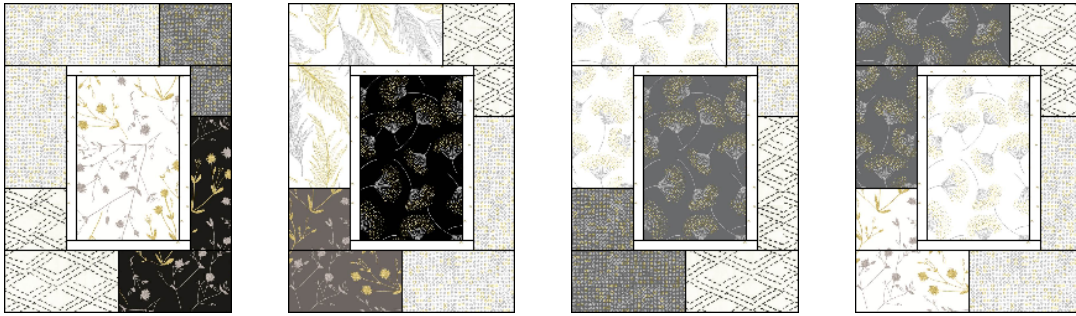
3. Sew together (1) 3 1/2" x 8" **fabric 2** rectangle and (1) 3 1/2" x 4" **fabric 4** rectangle, and add to the top of block center. Sew together (1) 3 1/2" x 6" **fabric 3** rectangle and (1) 3 1/2" x 6" **fabric 5** rectangle and add to the bottom of block center to complete (1) block.



4. Make a total number of blocks with the following fabric combinations:  
3 blocks:



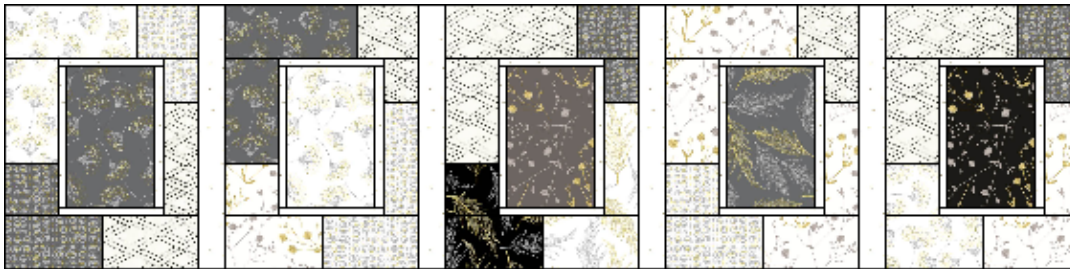
2 blocks:



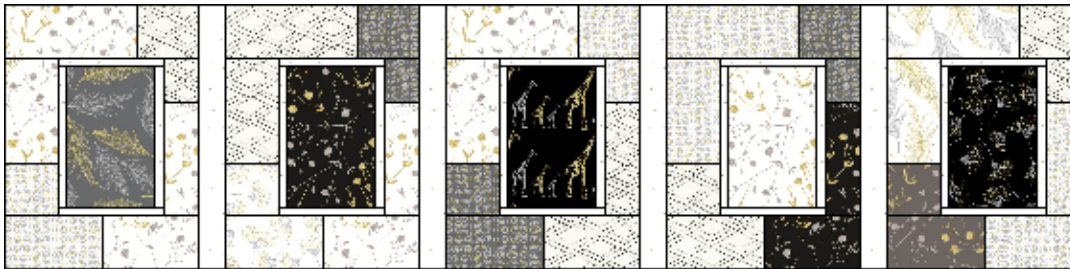
### Quilt Center Assembly

1. Pieced rows. Arrange and sew together (5) pieced blocks and (4) 2" x 15 1/2" **148 White Gold** sashing rectangles to make a pieced row.

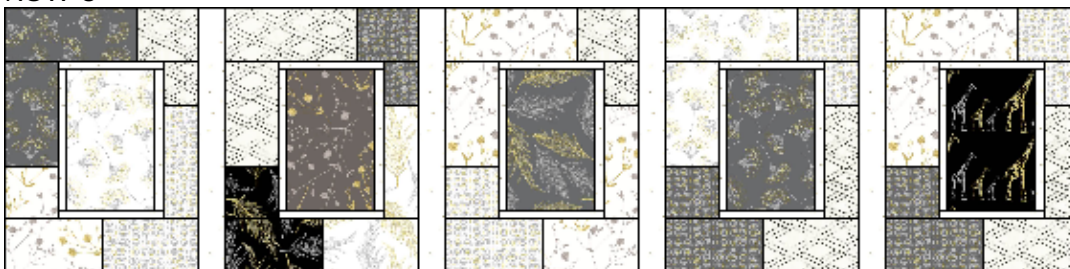
Row 1



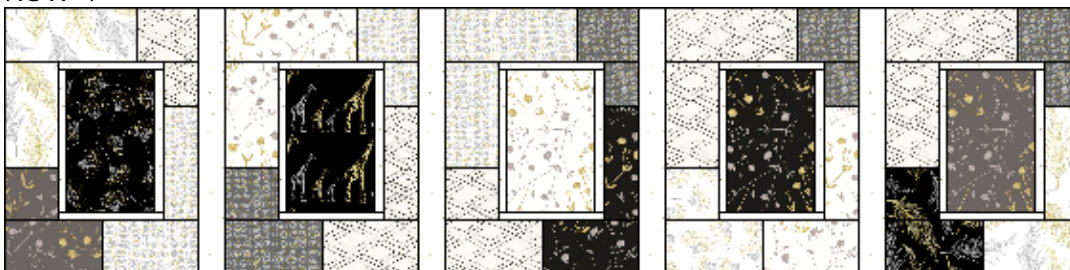
Row 2



Row 3

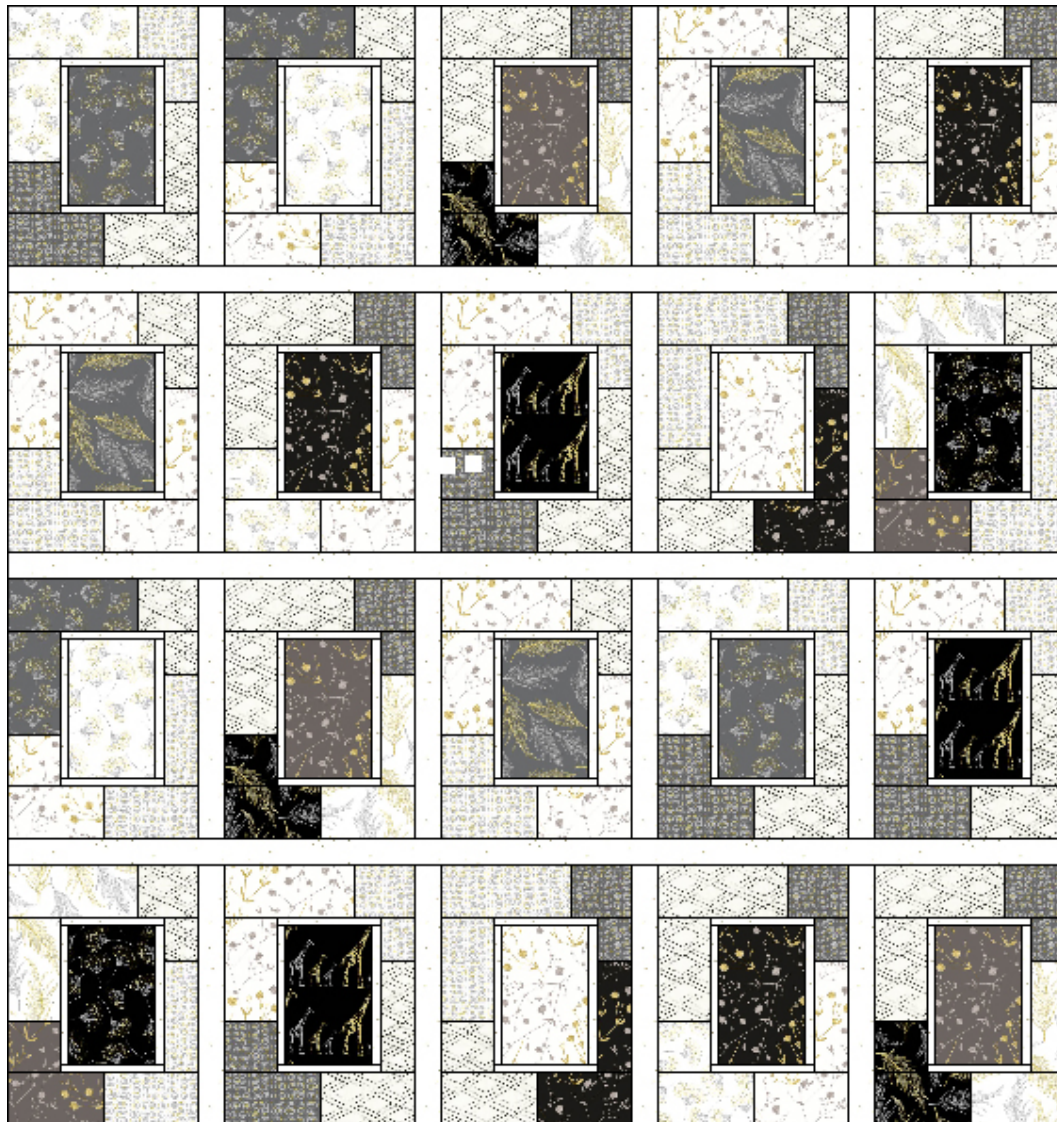


Row 4





2. Sew pieced rows and (3) 2" x 61 1/2" **148 White Gold** sashing strips to complete quilt center.



### Quilt Top Assembly:

1. Inner border. Sew (2) 3 1/2" x 65" **148 White Gold** strips to the left and right sides of quilt center, followed by (2) 3 1/2" x 67 1/2" **148 White Gold** strips to the top and bottom of quilt center.
2. Outer border. Sew (2) 4" x 71" **166 Chalk** strips to the left and right sides of quilt center, followed by (2) 4" x 74 1/2" **166 Chalk** strips to the top and bottom of quilt center to complete quilt top.

### Quilting Instructions:

1. With the backing fabric laying taut, place batting and then quilt top to form quilt sandwich. Baste sandwich.
2. Quilt as desired.
3. Bind to finish quilt.